



OCTOBER 2010 Issue

Fish First NEWS

Member Meeting 7 pm Oct. 21, 2010 at Oak Tree in Woodland

Featured In this issue:

<i>Gearing up for Banquet</i>	<i>page 1</i>
<i>EFL Daybreak Project Report</i>	<i>page 2 & 3</i>
<i>Chum Channel News</i>	<i>page 4</i>
<i>Oct. Members Meeting</i>	<i>page 4</i>

GEARING UP FOR THE 2011 BANQUET

This summer the Fish First Board set the wheels in motion for a bigger annual banquet and auction in 2011 with the announcement the Banquet would be at the Hilton Hotel in Vancouver, WA. Saturday May 1st.

FF just outgrew the Oak Tree's ability to provide enough space and support according to the Banquet Committee members. In part that is thanks to the successful events they hosted since FF was founded.

The potential to grow is also a major challenge. The Fish First Banquet Chair and Committee will have to measure up to said President Gary Darley. "We need more FF members participating in the Banquet and Auction preparations so no one has too big a load to carry."

Accordingly, FF will be looking for more volunteers but with less time commitment for each volunteer. This is a limited time event over a few months so it represents a limited commitment he added. Veteran banquet organizer Jody Brentin has agreed to head up the 2011 banquet and auction while Cindy Moss has a banquet season off.

FF expects Cindy will be back for 2012 as Banquet Chairperson and to represent banquet issues as a Board Member of FF. (continued page 2)

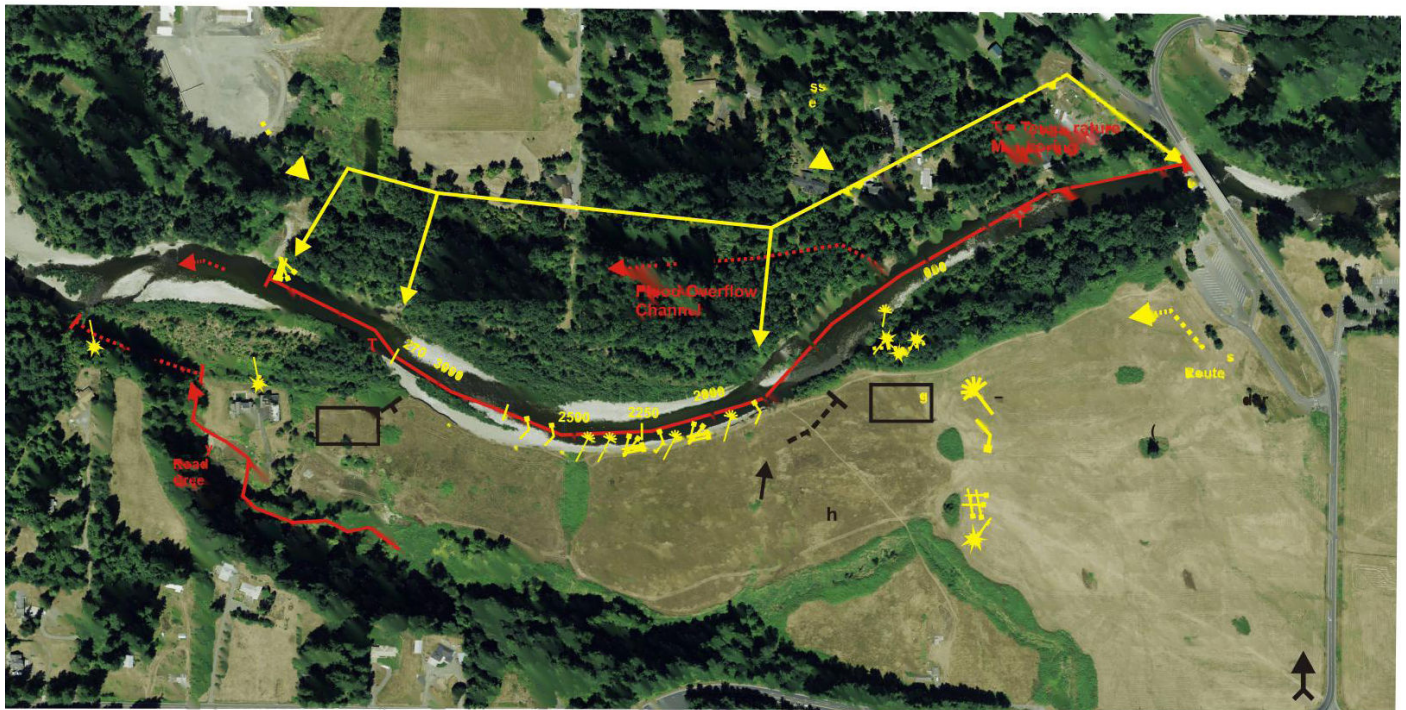
MEETING DATES 2010
MEMBER MEETINGS AT THE OAK TREE RESTAURANT IN WOODLAND
October 21, 2010
November 18 th
December 16
January 20, 2011
February 17
March 17
April 21
May 19
2011 Banquet & Auction Sat. May 7th

Please remember to do business with those who donate goods, services or their time to Fish First.

New Banquet committee members will have an experienced crew to guide them plus the opportunity to choose areas of work they are most comfortable with. If you want to jump in with both feet or just dip a toe in the water there are places on the banquet committee for you and it is a short time commitment. Call Cindy Moss now at 360-225-8476.

DAYBREAK PROJECT PLANNING REPORT TO FISH FIRST MEMBERS

By Dick Dyrland, Hydrologist, Head of FF Stream Team



Graphic of Daybreak Project Area on East Fork of the Lewis River. Upstream boundary in upper right of photo.

Fish First's Stream Team has been engaged in a two year planning effort in collaboration with several other agencies including Clark County and the Lower Columbia Fish Recovery Board as well as the WDFW. The following article sets out the problems with the river and proposed solutions. Actual Construction grants for the project will not be awarded until the next funding cycle and construction would be 2012

Problems: The lower EFL is an abused stretch of river having suffered loss of riparian areas including cover and loss of in-stream wood and associated stream bank erosion and sedimentation. This has led to excessive sediment in spawning areas and filled rearing pools and buried habitat structures in the river. There is an excessively wide and

shallow channel that does not carry its sediment load in equilibrium conditions, lethal water temperatures in summer and easy predation of fish.

Daybreak Project Objectives

1. Restore and enhance spawning and rearing habitat, especially submerged wood. This can be achieved by reducing stream bank and streambed erosion and associated sedimentation in pools, spawning areas and sediment intrusion into spawning gravels. The nature of the streambed erosion on both stream banks is such that large quantities of stream bank failure occur at once which both fills pools and smothers spawning areas.
2. Restoring submerged wood along the stream bank in all three project reaches to provide quality fish habitat, cover increase complexity and improve channel structure.
3. Establishment of a primary deep channel and associated deep pools. The deeper channel and associated deeper pools will provide much needed submerged cover for salmonids due to depth and will help reduce the occurrence of lethal summer stream temperatures.
4. Re-activation and improvement of stream side rearing habitat that has been lost or degraded over the years. Because of channel changes that mostly abandoned the old channels, they may only have water during bankfull flows, or are dependent on sub-surface flow. The side channels provide important rearing habitat, food sources, cooler sub-surface water as well as protection from flood flows. Re-activation or improvement can be done by deepening the existing channels to get flow up two existing side channels from the bottom end. Working from the bottom or outlet minimizes the risk of flood flow that would cause an avulsion and channel capture.
5. Restoration of the riparian area and overhead cover for salmonids. Re-establishment of the overhead cover to provide effective bank cover and stream shading will be difficult to achieve as the East Fork and the West Daybreak reach are excessively wide (190-200 ft.). Current bank conditions particularly along the terrace in reach two make it difficult to get the riparian vegetation close enough to the river under low summer flows to provide effective shade and to reduce water temperatures for salmonids. Therefore the objective of this plan is to get plant materials

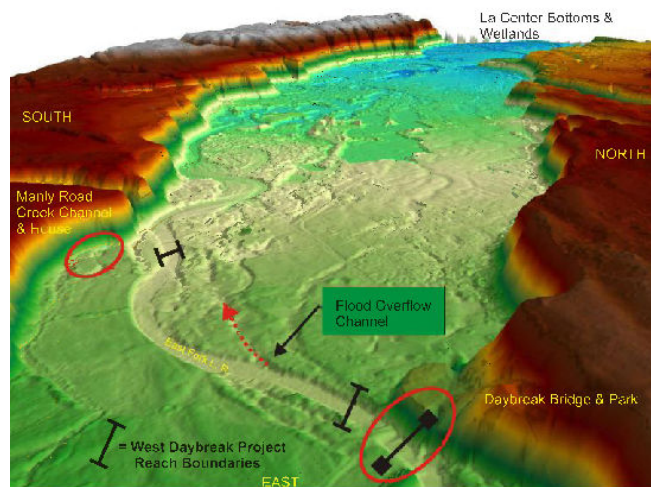
as close to the river as possible particularly in the presently un-vegetated Reach Two. In addition an objective will be to prevent the loss of existing mature riparian vegetation, by stream bank erosion protection done in conjunction with establishing more submerged wood cover.

6. Continue partnerships and cooperation with property owners, Home Owners Associations and local governmental agencies such as Clark County Public Utilities, Clark Dept. of Environmental Services, Clark County Parks and Recreation and WA Dept. of Fish and Wildlife.

__Comprehensive Approach__

The need for a comprehensive approach to this project is evident by the unique combined interest of the stakeholders. Therefore FF is working with the Parks and Recreation, Public Utilities, Clark Co. Conservation Futures Fund and others and is taking care to be as consistent as possible with the Lower Daybreak Park Master Plan.

Figure 1. Lower East Fork L. R. - LiDAR View Looking Downstream & West From Daybreak Park Bridge



2002 LiDAR Photo

Membership Meeting 7 p.m. Thurs. Oct. 21st
At the Oak Tree in Woodland

Meetings Chairman Jerry Sauer invites all FF members to attend this 7 p.m. meeting and get the 2010-2011 activity season off to a great start. There is always a drawing for a great prize but you can't win if you are not there. Ask at the front desk of the Oak Tree for the specific room if you have trouble locating it.

The Guest Speaker will be Jerry A Brown of Kingfisher Guide Service.



Jerry A. Brown

Jerry is also a Board Member of Fish First and keeps a close eye on events at WDFW as they affect the fish.

Fish First
PO Box 1505
Woodland WA 98674

Re-activation of Swanson Chum Channel

There has been considerable activity by the Board of FF and Founder Gary Loomis to both reactivate the old Chum Channel and to get Chum eggs. It appears this may be the year when that happens. We have been put off repeatedly by the State with regard to getting the eggs despite the history of Chum in the EFL. There was a FF project back in 2002 to create a chum channel on the Dean Swanson property on the EFL. That channel now needs cleaning out to prepare it and Gary is holding on to a promise from the Washington Governor's office that FF will get those Chum eggs this year. Chum are desirable for re-establishment from the standpoint that the young don't utilize rearing habitat for very long but almost immediately head downstream to the ocean. This simplifies rearing, nutrient and other issues.
