



Sept/Oct. 2009 Issue

Fish First NEWS

Member Meetings now at Woodland Grange.

In this issue:

Meeting place changes page 1

Dan on Net Pens page 2

Nutrients and Egg Boxes

Dick Dyrland, the E. Fork page 3,4

NEXT MEMBERSHIP MEETING

**Thursday October 15th 7 p.m. at
the Woodland Grange. 3rd and
Davidson in downtown**

**Dick Dyrland who manages the
habitat improvement work for FF
will provide the program**

On the Internet: www.fishfirst.org

Jerry Sauer, Membership Chairman, 360-607-1646
Harry Bresnahan, Membership meetings 360-225-9836
Jerry F. Brown, Newsletter Editor 360-600-8559

Meeting Place Changes

Based on advice from the Banquet Committee Fish First will be changing locations for meetings and the annual banquet. We may be in temporary locations for Board and Membership meetings until a suitable permanent location is found. We will let you know when a permanent location is found. In the meantime the October 15th meeting will be held at the Woodland Grange at 3rd and Davidson on the main floor.

MEMBER MEETING DATES 2009-2010

**Oct 15th,
November 19th,
Dec. 17th,
Jan. 21,
Feb. 18th,
March 18th,
April 15th,**

May 20th .

Gary's Column



Another Year and More Changes

I want to welcome you all back after a summer off to the October Issue of Fish First News and the October Membership meeting October 15th.

You will notice on the first page the prominent notice that member meetings have changed to the Woodland Grange for the foreseeable future. It was not easy to suspend our long term relationship with the Oak Tree where we had our banquets and our member meetings and it was done only after careful consideration by the Banquet Committee. We thank the Oak Tree for the many fine banquets we had in the past.

The Board has also voted in a new President Gary Darley, following the resignation of John DiVittorio some months ago. Gary is the founder and CEO of Lifeport a Woodland company manufacturing specialized parts for aircraft. Gary has the Board's unanimous support and I hope he has yours as well. I will have more news next month.

NET PENS, NUTRIENTS & EGG BOXES

DAN BALCH

Net Pen Chairman



The year is getting started for those of us involved in net pens, egg boxes and nutrients. This will be a short column as I am short on news for now

Dorenbecher Day last July

Back on June 15th and 22nd Don Lewis, Dan Balch, Roy Pickner and Bob Schneider spent 8.5 hours putting together 150 rods and reels and 150 tackle boxes for disabled children. On June 11th Jerry Sauer, Harry Breshnahan, Tom Golick, Alan Fulcer, Dennis Frantz, Gary Loomis, Greg Glass, Bob Schneider, John DiVittorio and Mark DiVittorio helped children at the fish ponds which held approximately 5000 fish between two and nine pounds in weight. Don Lewis and I had a table set up to fix tackle and repair rods and reels, hand out extra bobbers and gear. We all worked approximately 5.5 hours. There were numerous volunteers from other organizations as well and plenty of hot dogs, chips and pop plus T shirts and hats for the participants. Lots of prizes were handed out as well. Fish were cleaned and put in bags with ice and a good time was had by all.

Net Pens at Speelyai

We've been told we will be using seven pens at Speelyai this year. Five for Steelhead and two for Kokanee. The plan is to fill the pens about October 29th. We will probably have a work party about October 23rd or 28th to repair nets. We need about 8 members at 7:30 a.m. at the Speelyai boat launch to help put in the nets and pipe fish into the pens. You can contact me, Dan Balch, at 360-225-7388

Echo Net Pens

We have net repairs to do for the nets at Echo before putting in about 75,000 Spring Chinook about the first week in December. The repairs will take place at Gary Loomis' but we don't have an exact date and time yet. We will be having two membership meetings before the Echo work as well as another newsletter to get out the information so you can volunteer. Call me at 360-225-7388.

Nutrients

The freezer at the Lewis River Hatchery has been tested and is ready for an early October Nutrient Day. We will have received about 300 fish and put them all in the freezer the first day. The contact for Nutrients is Alan Fulcer at 360-225-5690 if you are interested in this very important project.

2009 Wrap-up Egg Boxes

Mike Moss reports he worked 167 hours and drove 2,308 miles over 37 different days to tend egg boxes in creeks with names like Pup, Bitter, John, Jackson, Kenyon, Stable, Hayes and Bootie and not to forget the Malinowski property. Much work is in weather when lesser mortals would have stayed indoors. Thanks Mike.

LOWER DAYBREAK PLANNING PROCESS

Dick Dyrland, Mgr. Habitat

This is important to Fish First as there are a number of potential uses that would not be good for the fish. For starters I don't believe it should be developed as an urban park. Current State rules about development along stream banks must be adhered to as well. It will take a strong presence to make sure the Master Plan development adheres to what is good for the East Fork of the Lewis River.

Clark County and Vancouver-Clark Parks and Recreation would like to invite you help prepare a master plan for Lower Daybreak Regional Park.

This undeveloped park property is an extension of Daybreak Regional Park, at 26401 NE Daybreak Road between La Center and Battle Ground. The 112-acre site is located on the south bank of the East Fork Lewis River next to the boat launch on the west side of Daybreak Road (vicinity map).

The property is relatively flat and open with some wooded side slopes. It borders the East Fork Lewis River to the north and Manley Creek runs through the south side of the property. Most of the site is currently open to the public and accessible from the boat launch parking lot.

What is a master plan?

The county must complete a master plan before development can begin. A master plan identifies a preferred mix of recreation uses and facilities that may be included on a specific park property. The county will install the features included in a master plan over time when funding and partnership opportunities are available.

How can I get involved?

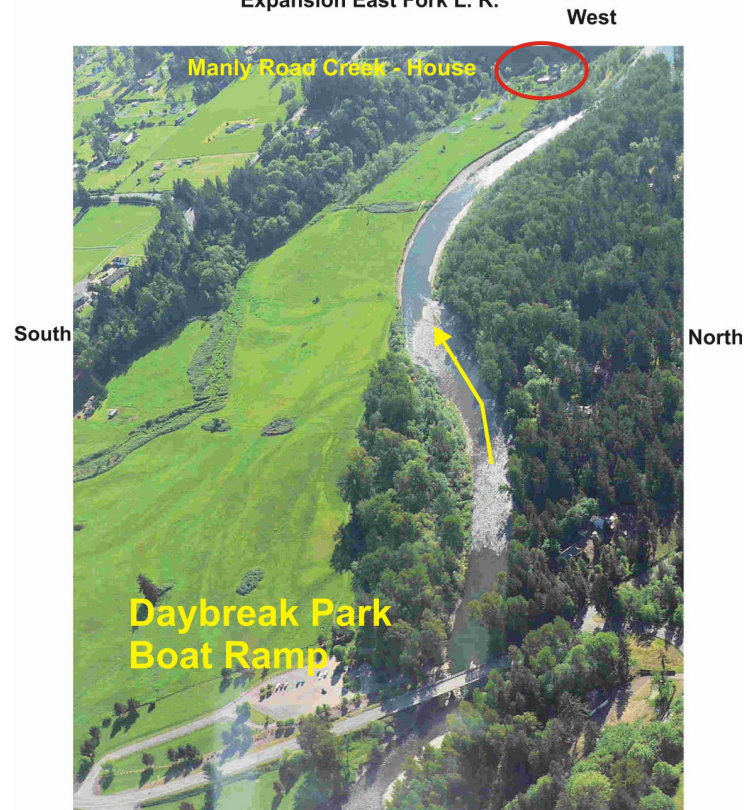
Interested members of the public are invited to review and provide input on the recreational amenities being considered for this site at an upcoming public meeting. The input received will be used to develop a proposed master plan for the park, which will be presented for review and additional input at a second public meeting in December 2009.

Come to the public meeting

7 p.m. Wednesday, Oct. 14, 2009

Daybreak Primary and Middle School Commons
1900 NW 20th Ave.
Battle Ground, WA

DOWNSTREAM VIEW
Proposed Lower Daybreak Regional Park
Expansion East Fork L. R.



FF Photo July 2007

East

Go online

People who are unable to attend the public meeting can review documents and provide input electronically through the project Web page starting on Oct. 15. Comments are due by Oct. 29. Project Web

page: www.clark.wa.gov/legacylands/LowerDaybreak.html

For more information, please contact: Pat Lee, Program Manager

[Clark County Legacy Lands Program](http://www.clark.wa.gov/legacylands/LowerDaybreak.html)

Phone: (360) 397-2375 ext. 4070

E-mail: Patrick.Lee@clark.wa.gov

Jean Akers, Park Planner

Vancouver-Clark Parks and Recreation

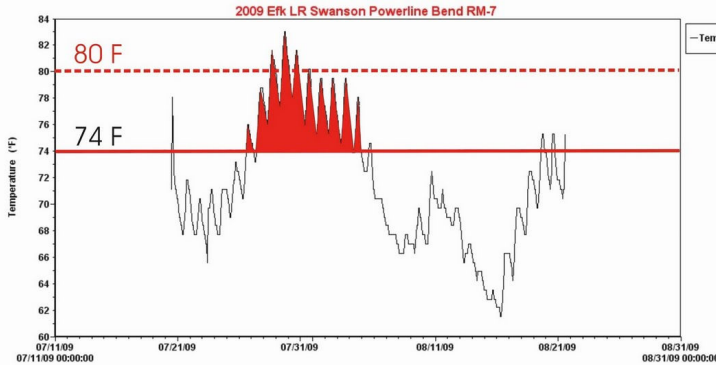
Phone: (360) 619-1120

E-mail: Jean.Akers@ci.vancouver.wa.us

**Lower East Fork of Lewis Temperatures
By Dick Dyrland, FF Mgr. Of Habitat**

High Water temperatures and low flows in the East Fork of the Lewis River threaten recovery of salmonid fish populations in the river. The East Fork supports EPA "Threatened and Endangered" listed Coho, Fall Chinook and some Chum Salmon as well as Sea-run Cutthroat and both Summer and Winter Steelhead.

I am gravely concerned with the low water flows in the lower East Fork. While USGS averages show a somewhat lower flow for the last ten years than the historical averages, that does not tell the story on this limiting factor in the river. The USGS recorded low flows in the 40-50 cfs range for late August and much of September. Record low flows have been recorded in the 30 cfs range. Monitoring by Fish First in several key sites during summer low flow shows there is little effective summer inflow into the lower East Fork below the Heisson Gage about 11 miles upstream from the Heisson Bridge.



Temperatures July 1 through August 21, 2009

Friends of the East Fork (FOEF) hourly data for this summer showed the temperatures reached a fish stress level of 74 degrees and peaked at over 80 degrees for four days in one eleven day period in late July and early August.

This indicates that at low flow periods, it may be that any inflow is going sub-surface or under the stream bed and/or there is a loss of flow from just below Lewisville Park and on down to just above the city of La Center. Deep pools and springs can provide thermal refuge if there are enough of them but in the East Fork the original pools have been degraded or lost due to bed-load sedimentation in the lower river over the last 20 plus years.

Damage

High stream temperatures and low flows can combine to produce harmful conditions for many species using the river. This situation is not going to solve itself and if remedies are not taken the East Fork will face even more serious challenges in the future. Both Fish First and Friends of the East Fork are calling attention to the deteriorating situation and doing what they can but it also takes cooperation by all the users along that watershed and a higher level of attention and action by controlling agencies of the government.

[Don't Forget, Membership meetings are now at Woodland Grange. 3rd at Davidson in downtown Woodland](#)

**FISH FIRST
PO BOX 1505
WOODLAND WA 98674**