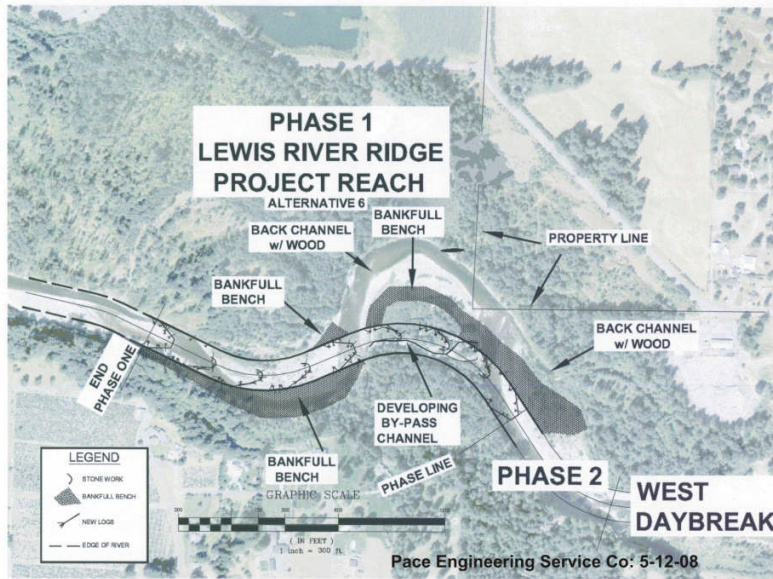
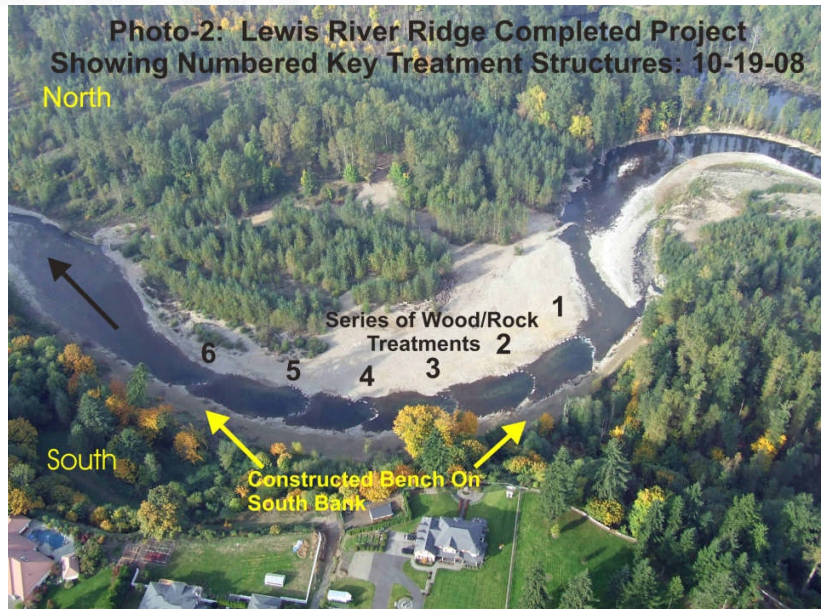


Diagram-1: Showing The Design Of Alternative-6 Which Was Intended To Prevent Avulsion Of The Old Overflow Channel & Treat The Channel Bend Below.

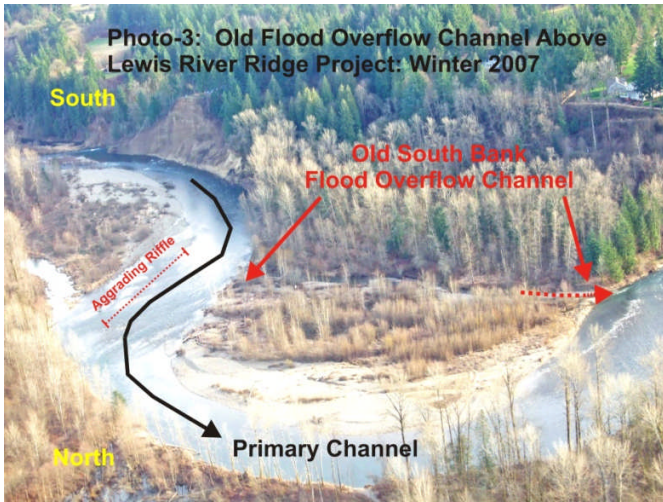


**“Alternative 6”
 Planned By Fish First
 But Later Rejected
 By Agencies**

**Completed
 Lewis River Ridge
 Project: Oct. 2008**



**Fully Functioning
 Project Before
 2nd Major Flood Of**



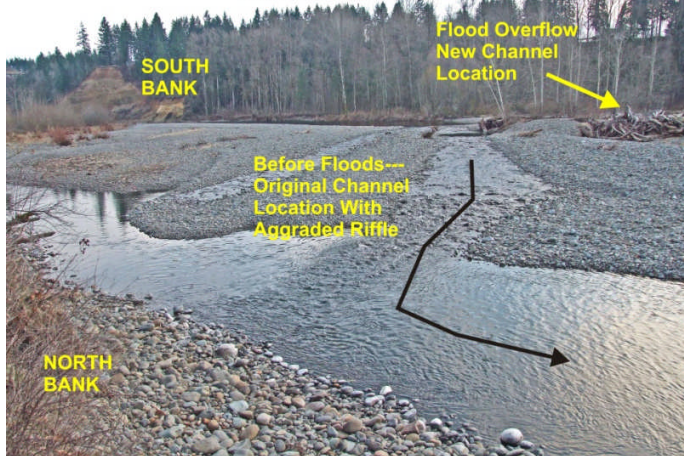
**After Avulsion Of Old
Flood Overflow Channel
– 2nd & 3rd Floods 2009**

**Before Avulsion
Of Old Flood Overflow
Channel -2007 Photo**



Photo 4A: Showing Sediment From Eroded Flood Overflow Channel Accumulating On Project Treatments: 1-18-09

Photo 4C: View Looking Upstream, Showing Abandoned Primary Channel Above The Project & After Avulsion Into Old South Side Flood Overflow Channel: 2-22-09



**Current Feb. 2009 Project
Channel Conditions**

**View Of Abandoned
Primary Channel After
Avulsion Into Old Overflow
Channel**

Photo-10B: New Primary Stream Flow Path About 29 Days After 3rd Flood, Showing Pre-Flood & Pre-Avulsion Project Design Channel In Red & New After Floods Primary Channel Location, Which Avulsion Sediment Created: 2-6-09

